

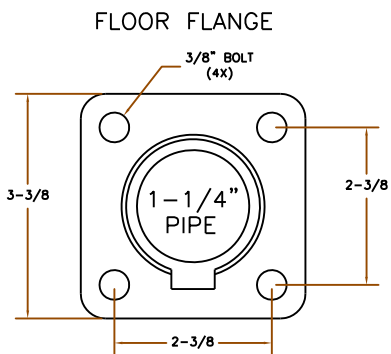
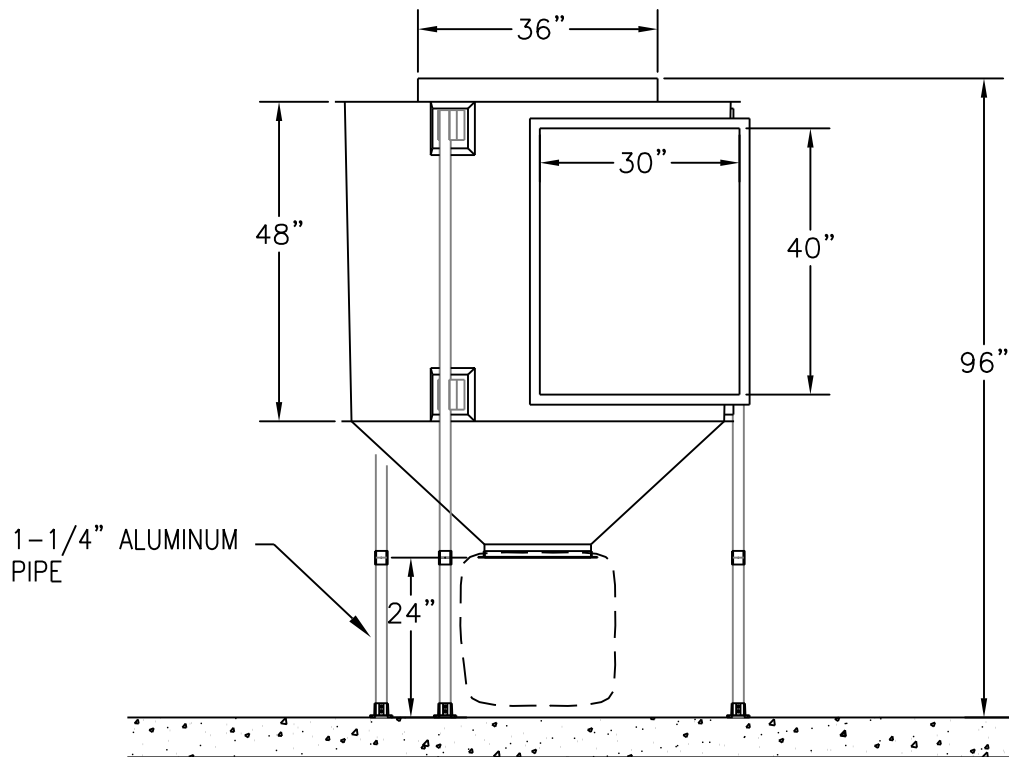
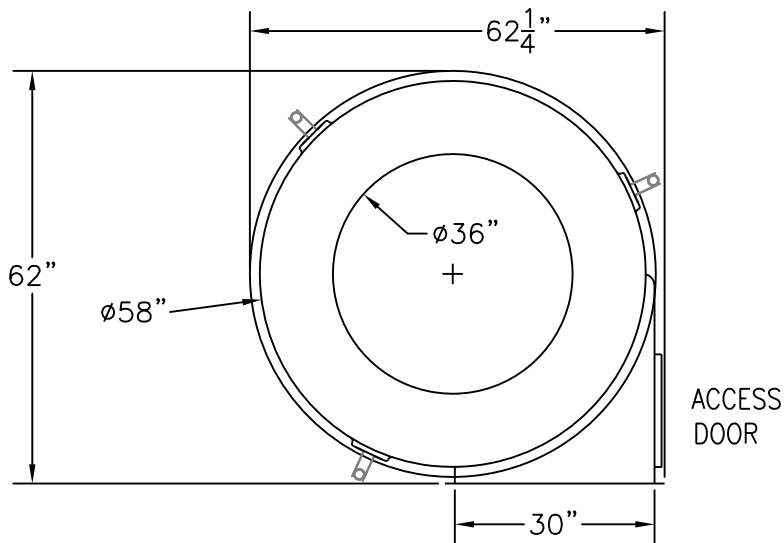


**SPECIFICATIONS**  
**DLF-518-W Dry Lint Filter**

**System 500** models represent a design concept requiring minimum space to install while providing large area filtration screens. All models are tall, slimline, and compact; often referred to as "inline" or inside models. **System 500** models are all-weather construction and may be mounted outside.

**Max. Capacity:** 18,000 CFM  
**Screen Area:** 57 Sq. Ft.  
**Screen Change Time:** 15-30 min.  
**Compressed Air:** 50 Gal @ 110 psi  
**Electrical Req.:** 115V/1P, 3 amp

**Shipping Weight:** 750 lbs.  
**Shipping Cube:** 68"W x 68"L x 76"H  
**Ave. Static Pressure:** 0.25 WC  
**Blowdown Time:** 10-15 sec



LINT FILTER-ASSEMBLY-INSTALLATION  
MODEL DLF-518 RH INLET

CLEAN CYCLE SYSTEMS  
A DIVISION OF TECNI-QUIP, INC.  
960 CROSSROADS BLVD, SEGUIN, TX 78155  
830-401-4400

DRAWN BY	HDP
DATE	10/20/08
DRAWING NO.	cc518-W